

Base handrinse

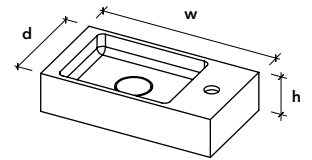
As the name suggests, the Base handrinse is a collection of basic-shaped models. It is characterized by the 12mm radius inside the basin.

This collection aims to be accessible, adaptable and easy to maintain. Not only is Base perfect for the domestic environment, but its characteristics also make Base an ideal choice in hygienic surroundings and intensively-used restrooms.



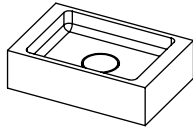
Specifications

- with our Flush drain
- delivered as wall-mounted version including mounting holes in the back edge
- standard size tap hole Ø30mm
- Base handrinse Models are also available in top-mounted versions

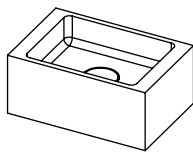


d200mm - no tap hole

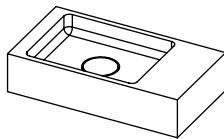
HBS01
w300 x d200 x h85mm
bowl w240 x d176 x h40mm



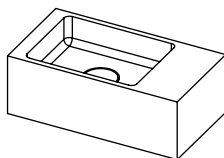
HBS02
w300 x d200 x h130mm
bowl w240 x d176 x h60mm



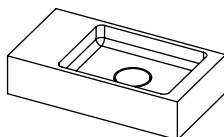
HBS03
w370 x d200 x h85mm
bowl w240 x d176 x h40mm



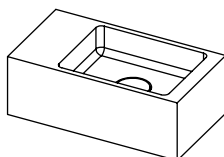
HBS04
w370 x d200 x h130mm
bowl w240 x d176 x h60mm



HBS05
w370 x d200 x h85mm
bowl w240 x d176 x h40mm

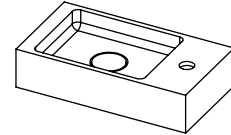


HBS06
w370 x d200 x h130mm
bowl w240 x d176 x h60mm

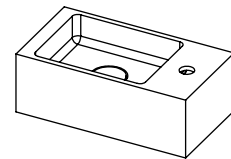


d200mm - with tap hole

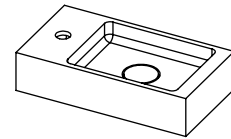
HBS07
w370 x d200 x h85mm
bowl w240 x d176 x h40mm



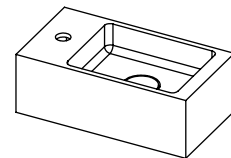
HBS08
w370 x d200 x h130mm
bowl w240 x d176 x h60mm



HBS09
w370 x d200 x h85mm
bowl w240 x d176 x h40mm



HBS10
w370 x d200 x h130mm
bowl w240 x d176 x h60mm



Materials and colours

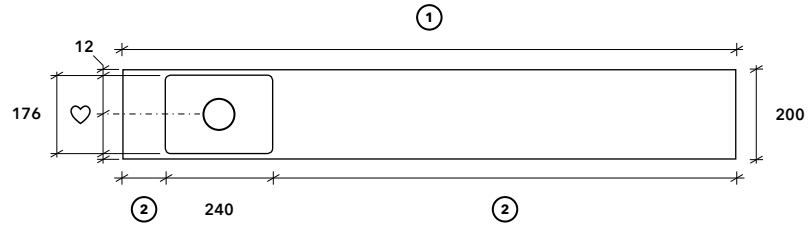
- Hi-Macs**
- White
 - Grey

Handrinse layout

Make a choice between Base or Base Light handrinse and fill in positions 1 and 2.
After this define the size of the bowl. Go to page 103 for Base and Base Light handrinse bowl sizes.

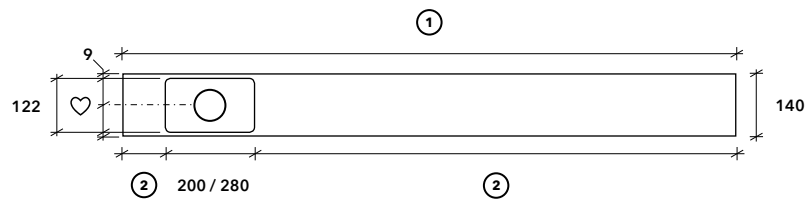
BASE

- ① max. 2000mm
- ② min. 30mm
min. 80mm with tap hole



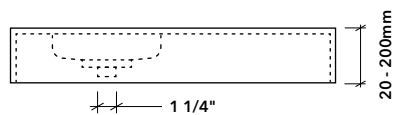
BASE LIGHT

- ① max. 2000mm
- ② min. 30mm
min. 80mm with tap hole



Edge

Base and Base Light handrinse always comes with a front and back edge. In order to conceal the bowl, Not Only White recommends an edge height as mentioned on the next page at the 'Bowls' section.



EH100

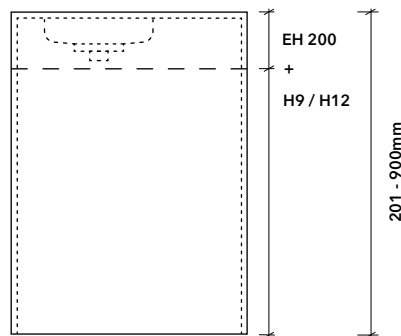
Edge 20 - 100mm high

EH150

Edge 101 - 150mm high

EH200

Edge 151 - 200mm high



EH200 + remaining m² in H9 for Base Light

Edge 201 - 900mm high

EH200 + remaining m² in H12 for Base

Edge 201 - 900mm high

XSG50

50mm plinth for floor-standing model

Bowls

Base handrinse

CHBS24174

w240x d176 x h40mm
rec. edge height 85mm



CHBS24176

w240x d176 x h60mm
rec. edge height 100mm



CHBS241710

w240x d176 x h100mm
rec. edge height 140mm



Base Light handrinse

CHBSL20125

w200 x d122 x h50mm
rec. edge height 85mm



CHBSL20128

w200 x d122 x h85mm
rec. edge height 130mm



CHBSL28125

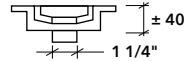
w280 x d122 x h85mm
rec. edge height 130mm



Drain type

Depending on how the handrinse basin needs to look and work, you can choose from different drain types for Base handrinse.

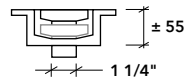
1 FLUSH DRAIN free flow drain



Base handrinse bowls are standard equipped with our Flush drain. This drain allows water to flow through at all times and cannot be closed.

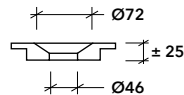
Flush drain is free of charge

2 POP-DOWN DRAIN closable drain



Contact us for information.

3 DR72 DRAIN HOLE for a third party drain



The DR72 drain hole is used for third party drains.

Not Only White recommends to use a free flow drain.

DR72 drain is free of charge

Overflow

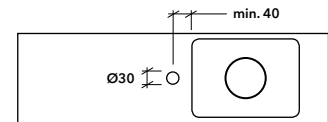
Contact us for information.

Tap hole

If you need to fit a top-mounted tap, we can pre-drill the hole (code **HH35**).

Consider the space you would need to secure the tap with a tightening ring.

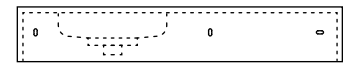
Top-mounted tap without overflow:



Mounting holes

To install a handrinse basin to the wall, Not Only White can provide mounting holes (code **OVHL**) in the back edge.

Handrinse basins up to 600mm need two holes. Any handrinse basin wider than 600mm, we advise to have an extra hole up to 1.2m and two extra holes up to 2m.



Cut-outs and edge finishes

Please refer to page 8.

Materials and colours

- Hi-Macs**
- White
 - Grey